

# Colostrum 200™

## PREMIUM COLOSTRUM REPLACER

*Colostrum 200™ is the veterinarian-recommended complete colostrum replacer that provides high levels of immunity in a single feeding.*

### WHOLE BOVINE COLOSTRUM

Made with whole bovine colostrum. No blood, whey, egg or other ingredients not naturally found in maternal colostrum.

### HIGH IMMUNITY

IgG molecules are readily absorbed for maximum immune protection.

> 85% IgG1 - The antibody most effective in providing local immunity and to reduce disease associated with failure of passive transfer.

Broad spectrum of antibodies to combat against whatever pathogens the calf may be exposed to.

### COLOSTRAL FAT

An important energy source required by calves immediately after birth. Colostral fat is proven to help calves thermoregulate to survive and thrive through harsh environmental conditions.

### SAFE AND EFFECTIVE

Heat-treated to effectively eradicate any pathogens that could cause disease. USDA Veterinary Biologics licensed, proving safety, purity, potency and efficacy as a total replacement for maternal colostrum so calves can achieve successful passive transfer of immunity.

### CONVENIENT

Easily mixes in under 15 seconds!

3-year shelf life.



WHOLE BOVINE COLOSTRUM



IMMUNE SUPPORT



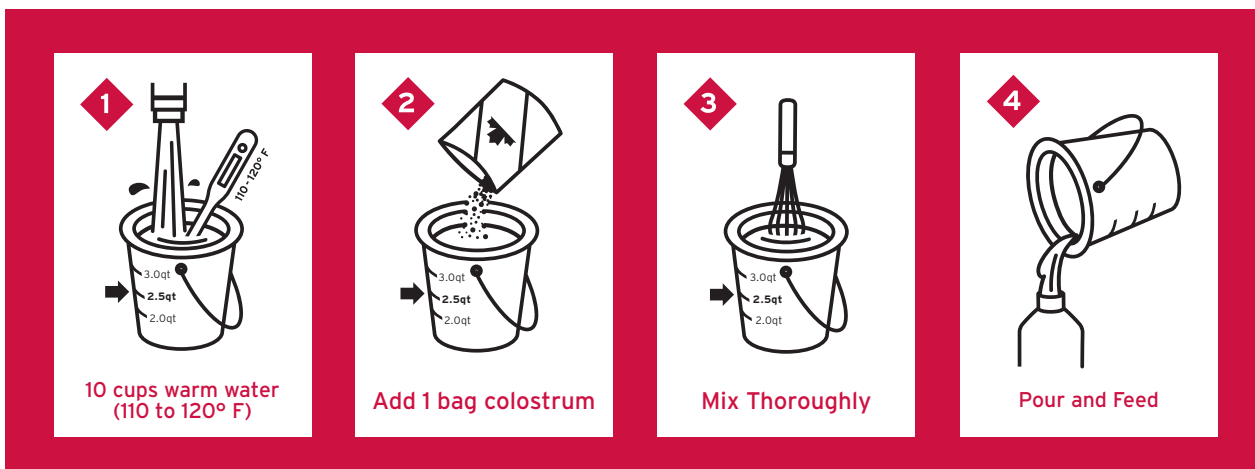
COLOSTRAL FAT ENERGY

### TYPICAL ANALYSIS (PER BAG)

Ingredients	Bovine IgG
Net Weight	750g Powder
Immunoglobulins for Immunity	200g IgG (26.6%)
Crude Protein	55%
Colostrum Fat for Energy	18%

*Calf's Choice Total® is a research-proven, whole bovine colostrum product line for producers to optimize calf health and productivity by improving their colostrum program.*

This first meal establishes a healthy immune system, replenishes energy and provides essential nutrients and growth and metabolic factors to survive the first vulnerable weeks of life. Research has proven that calves receiving an excellent dose of colostrum go on to become thriving, productive animals in the herd.



### INDICATIONS

To replace maternal colostrum as an aid in the treatment of Failure of Passive Transfer (FPT) in newborn calves.

### DIRECTIONS

To replace maternal colostrum:

Mix and feed according to package directions. Feed the first dose as soon as possible, preferably within 2 hours of birth for maximum absorption of antibodies.

Product Use	Number of Bags	Amount IgG Fed	Amount of Water
Supplement	1/2 (375g)	100g	5 cups
Replacement	1 (700g)	200g	10 cups

